

BWFH Community Meeting

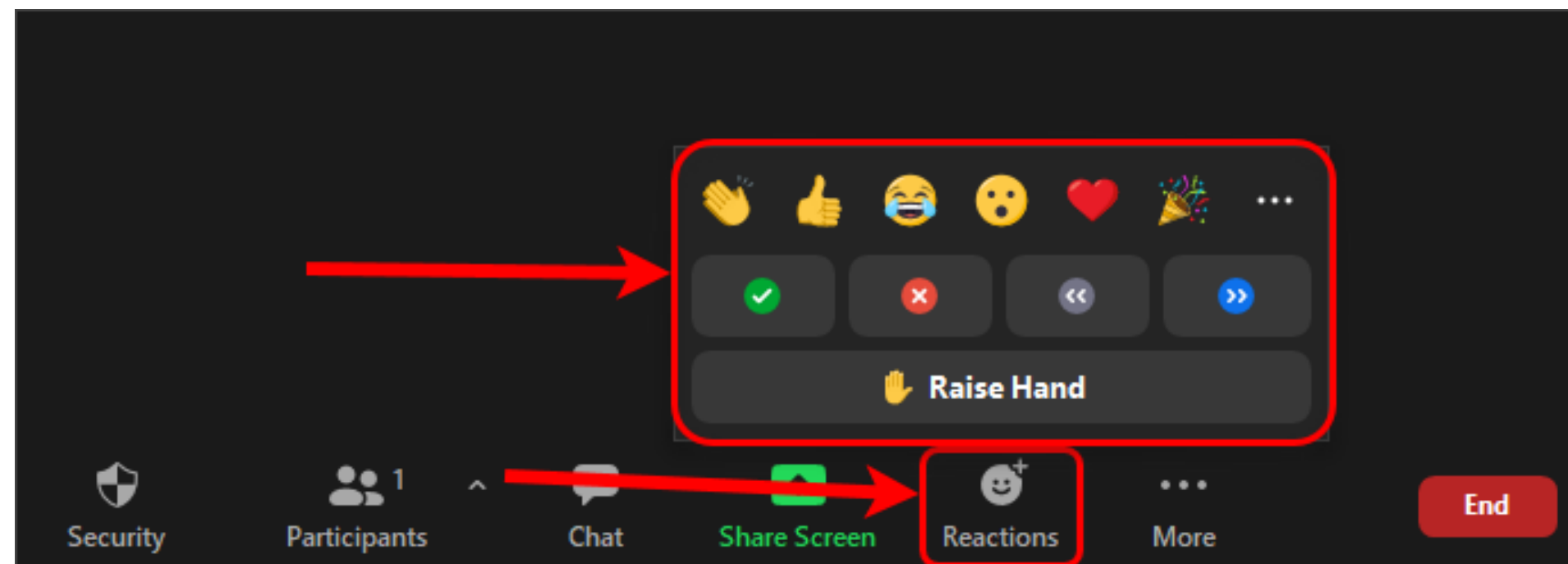
BWFH Inpatient/Garage



MEETING FORMAT

Presentation by Brigham and Women's Faulkner Hospital Questions/Comments from the Public

During the presentation, we ask that you keep your microphone muted and refrain from comments. Once the presentation is over, we will take questions. You can raise your hand under **Zoom “reaction” button** and we will take your questions orally in the order that hands were raised.



Agenda

- 1 Project Overview
- 2 Construction Updates
- 3 Construction Schedule/Project Milestones
 - Landscape Overview/Schedule Updates
 - Bike Parking Schedule Updates
- 4 Construction Impacts
 - Centre Street/Allandale Upcoming Work Logistics
 - Garage Demolition and Surface Lot Logistics
- 4 Community Health Initiatives Update
- 5 Construction Communications
- 6 Questions



Project Overview



Inpatient Addition - Construction Update



Project Rendering from Allandale



Inpatient Addition - Construction Update



Project View from Allandale



Replacement Garage - Construction Update



Project Rendering from Allandale



Replacement Garage - Construction Update



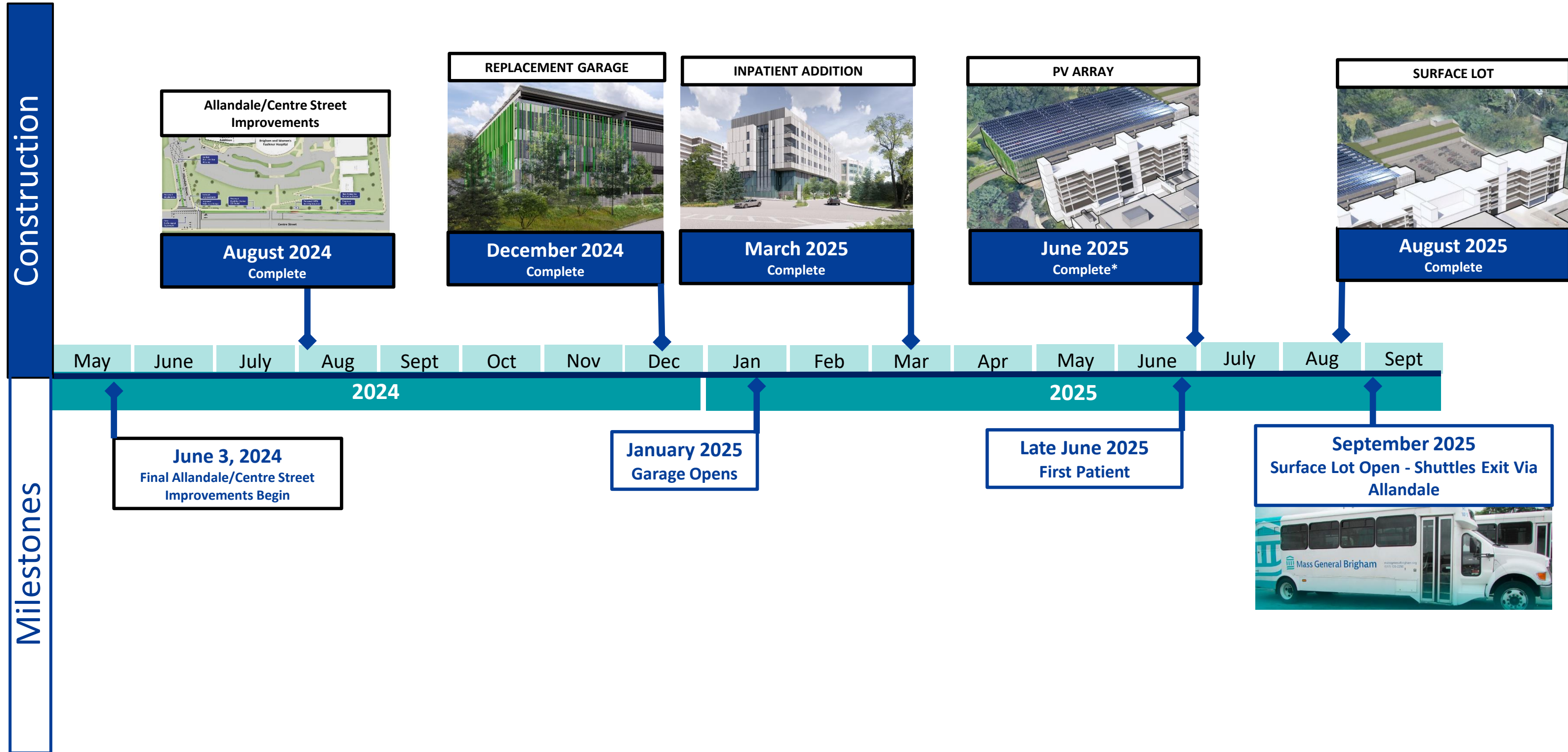
Project View from Allandale



Replacement Garage - Construction Update



Construction Schedule/Project Milestones



* Construction Start of PV Array Contingent on Eversource Interconnect Agreement.



Landscape Overview



- **6 Trees Fell** due to inclement weather (Microburst)
- BWFH Replacing with 4 Evergreens and 2 deciduous trees.



196 New Trees
 + 8 Trees to replace (7) trees fallen due to inclement weather
 + 2 Trees to replace (1) tree removed due to construction
206 New Trees Total



KEY	
	Existing tree - deciduous
	Existing tree - evergreen
	Wooded area
	Proposed tree - deciduous
	Proposed tree - evergreen
	New Proposed tree - deciduous
	New Proposed tree - evergreen



Tree Planting Schedule

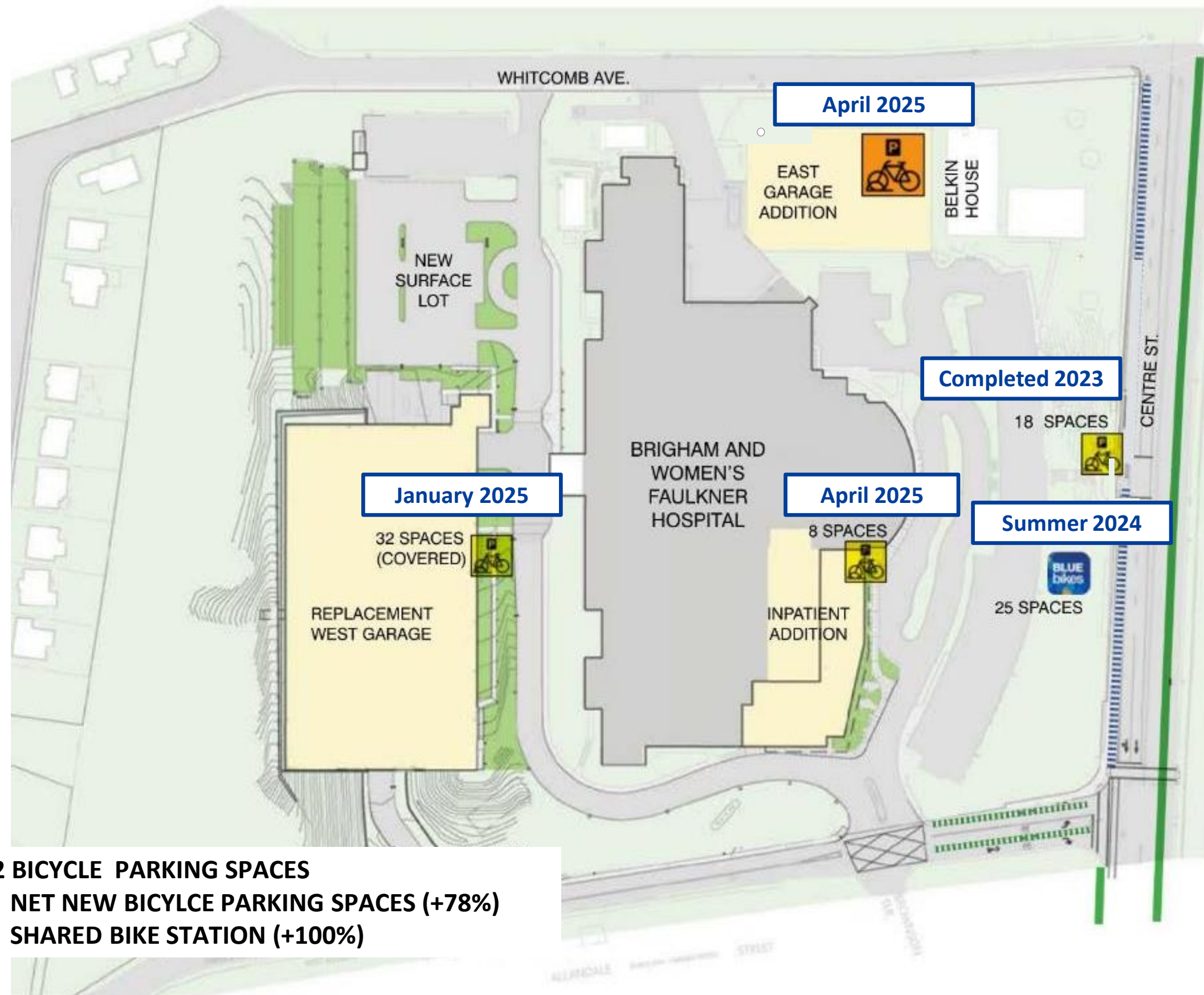


Key Landscape Schedule

-  Fall 2024
-  Spring 2025



Bike Parking Construction Schedule



Total Combined Bike Spaces:
112 Long and Short-Term Spaces
25 Spaces at Shared Bike Station

Legend

-  Short-Term Bicycle Parking (58 SPACES)
-  Long-Term Bicycle Parking (54 SPACES)
-  Shared Bike Station (25 SPACES)

BWFH Bicycle Plan

- + 112 BICYCLE PARKING SPACES
- + 88 NET NEW BICYCLE PARKING SPACES (+78%)
- + 25 SHARED BIKE STATION (+100%)



Community Construction Impacts Update



Allandale/Centre Construction Impacts

- Step 1 - Centre Street Sidewalk Repairs (For Sidewalk Work Completed in 2023)
- Step 2 – Traffic Mast Arm Installation & Demolition of Existing Centre/Allandale Int.
- Step 3 – Centre Street Median Curb Repairs
- Step 4 - Allandale Garage Utility Connections (Not Shown in plan)
- Step 5 - Allandale Mill and Overlay + Striping
- Step 5A – Line Striping Centre for bike lane and road traffic changes**

June 3rd – 4th

June 5th – June 14*

June 17th – June 21*

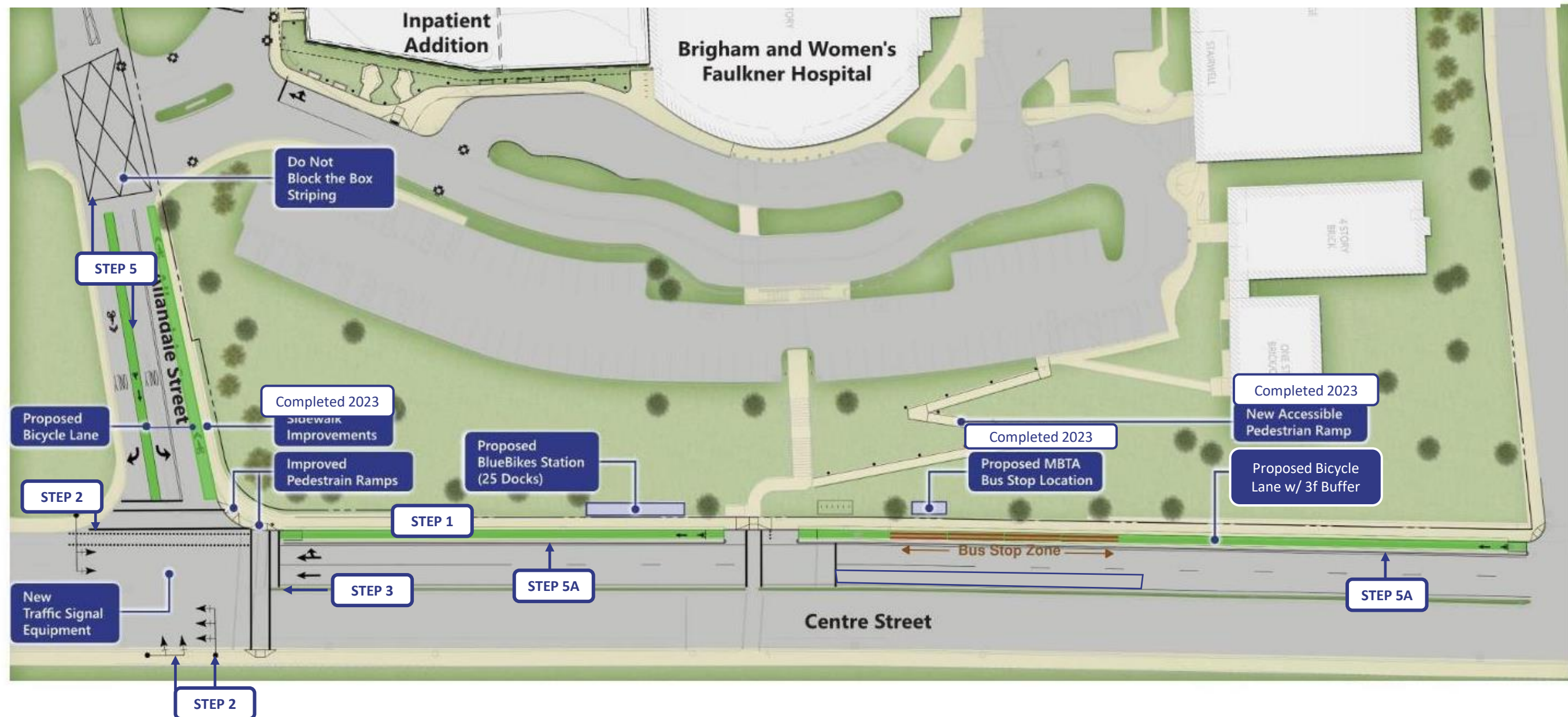
May 28th – June 21*

TBD

TBD

* Dates are subject to change due to weather conditions or state police detail availability.

* All work on Centre Street requiring lane closures will be from 9AM-3PM/All Utility Work on Allandale will be from 8AM-3PM.



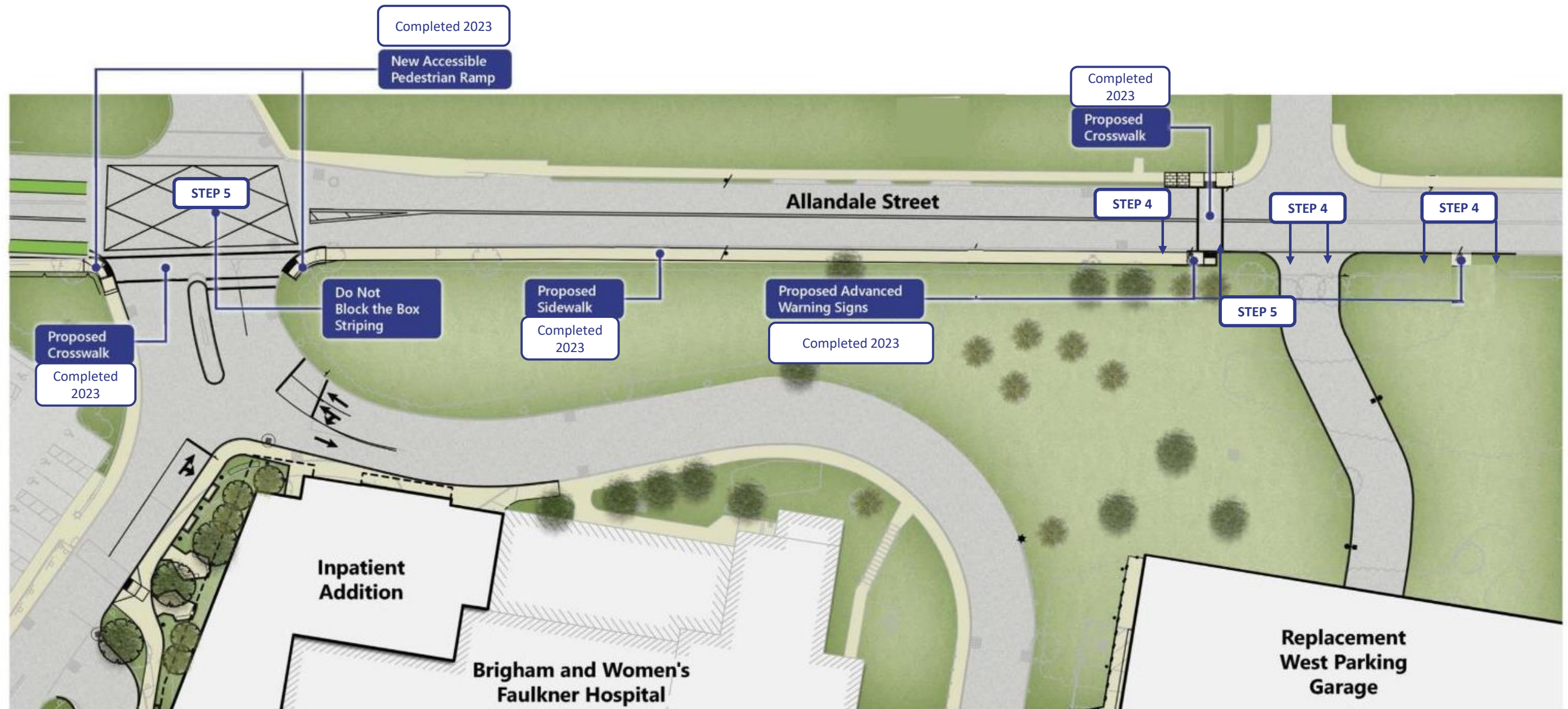
Allandale Construction Impacts

- **Step 4 - Allandale Garage Utility Connections** (Storm, sewer and fire connections)
- **Step 5 - Allandale Mill and Overlay + Striping**

May 28th – June 21*
TBD

* Dates are subject to change due to weather conditions

* All Utility Work on Allandale will be from 8AM-3PM.



Garage Demolition Impacts

Misting and Dust Monitoring During Garage Demolition



Garage Demolition with a Grapppler

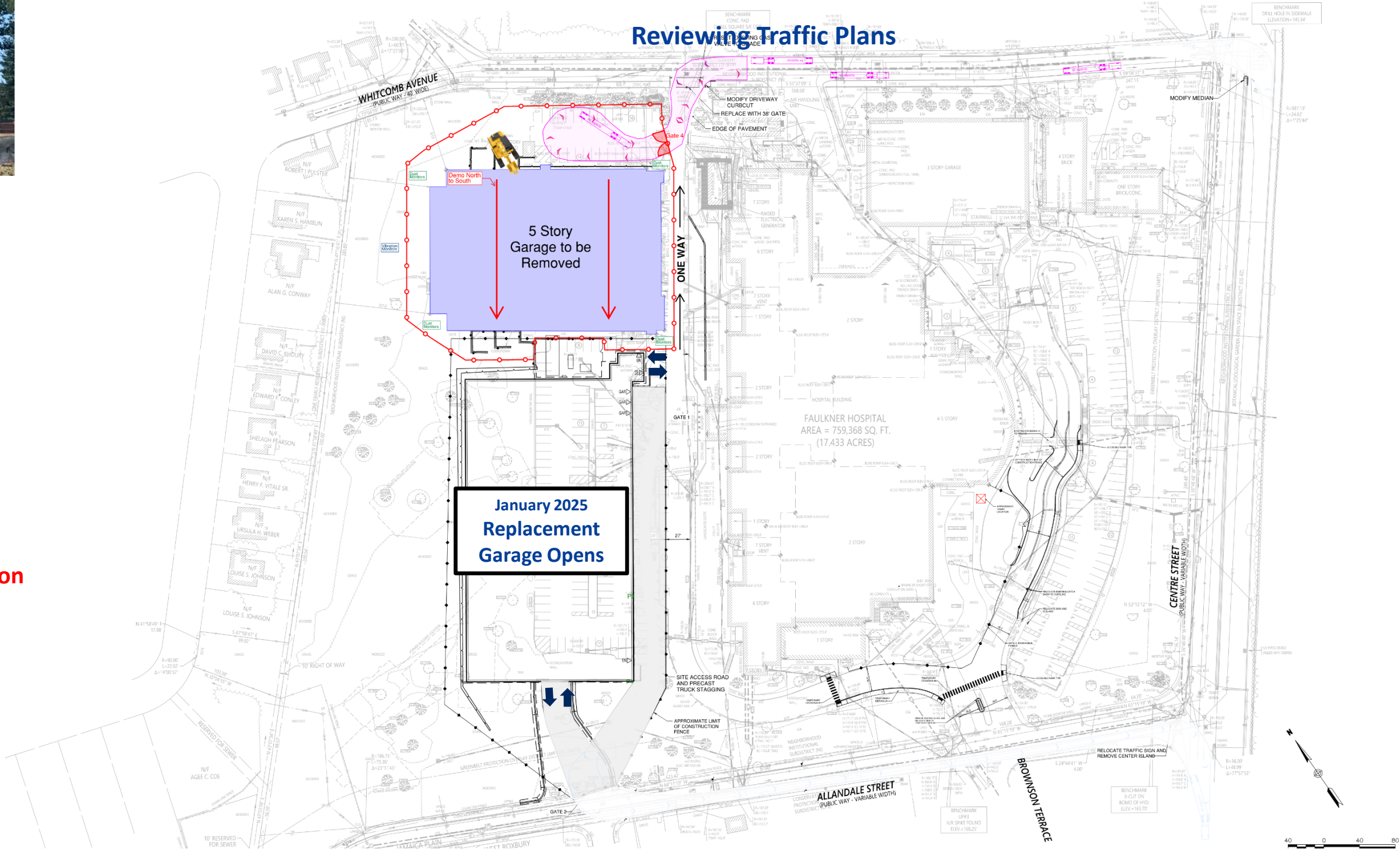


Garage Foundations Demolition with a Hoe Ram



- Garage Demolition
- Surface Lot Construction
- Surface Lot Opens- BWFH Shuttles Enter and Exit Via Allendale

Winter/Spring 2025
 Summer 2025
 September 2025



Reviewing Traffic Plans



Community Health Initiatives Update



Brigham and Women's Faulkner Hospital Community Health Initiatives Grantees 2024

Casserly House

Improve, expand, and establish capacity across multiple social determinants of health, including mental health, language skills, and affordable housing for immigrants and those serving this population.

Italian Home for Children

Recruit, train and place behavioral resource specialists in local schools, focused on community members with lived experience.

Doc Wayne's

Therapeutic Recess

Empower students in recognizing, expressing, and managing challenging emotions during recess and beyond.

Ethos

Train staff in mental health first aid to provide basic mental health support services for older adults in BHA housing sites.

Neighborhood Villages, Inc

Early education access to mental health consultation, educator professional development, family training and support, and resource referrals for any external mental or behavioral health needs.

Vital CxNs

Enhance community access to behavioral health services through mental health awareness and acceptance by demystify mental health and address stigmatization in BIPOC communities facing economic and health inequities.

William James College

Increase resources and build capacity with ESL training specific to behavioral health, digital literacy, CHW competency and jobs focused on aiding vulnerable populations to achieve racial and ethnic health equity.

Young Man With a Plan

Identify young Black men aged 14-24 to make academic and social/emotional gains and access sustainable by strengthening academic, social/emotional, critical thinking, and financial literacy skills; quality partnerships; and creating a protective community.

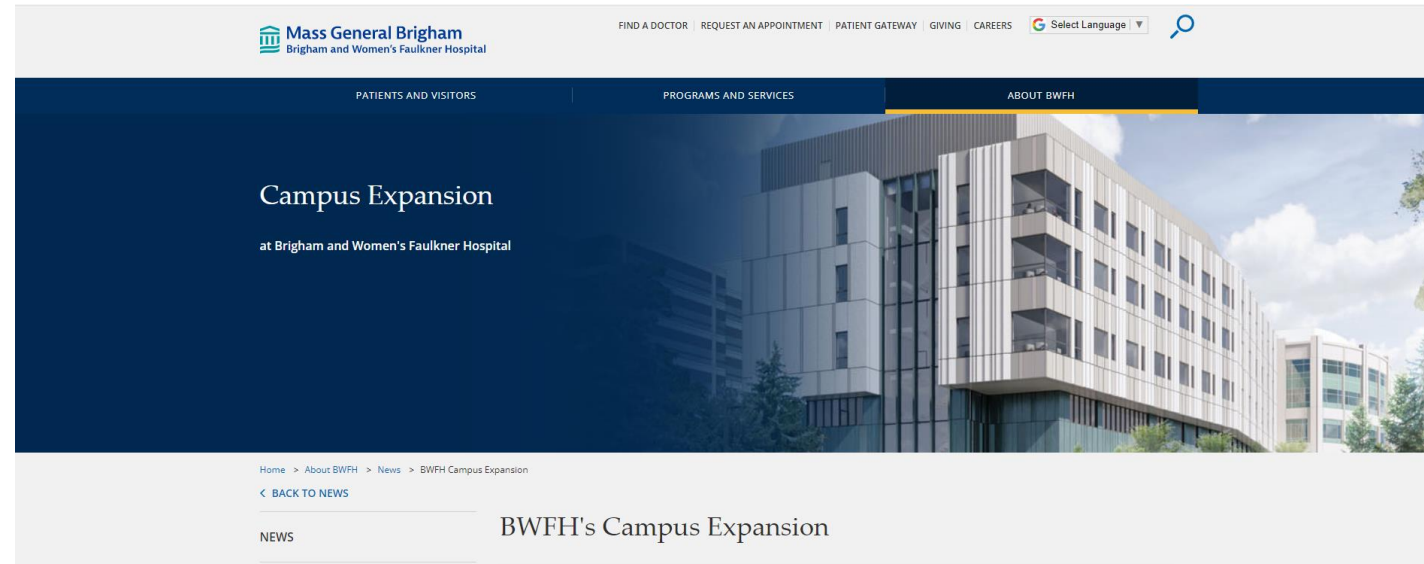
Total: \$4.5M over 3 years



Construction Communications



Construction Communications



- Construction Updates are posted @ www.BWFH.org/building
- E-mail updates to be shared with community
[Contact Community Liaison to be added to e-mail list](#)
- Community Liaison – Contact
Lori Schroth
Senior Director, Internal Communication
Marketing & Communication, Mass General Brigham
Telephone: 617-525-6374
E-mail: lschroth@bwh.harvard.edu



Questions?

