

BWFH Community Meeting

BWFH Inpatient/Garage



October 4, 2022

Confidential—do not copy or distribute

MEETING FORMAT

Presentation by Brigham and Women's Faulkner Hospital Q&A/Comments from the Public

During the presentation, all microphones will be muted. However, if you have a clarifying question about something in the presentation, please submit your question through the "Q&A" tab and we will do our best to answer it while the presentation is in progress.

Once the presentation is over, we will take questions and comments in two ways:

- Through the "Q&A" tab at the bottom of your screen; or,
- You can raise your hand and we will take your questions orally in the order that hands were raised.
- You can raise your hand if you are in the audience.

MEETING RECORDING

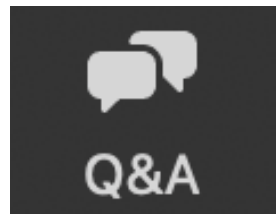
We will be recording this meeting and posting it on our webpage for those who are unable to attend the Zoom meeting live. The recording will include the presentation, Q&A, and public comments afterwards. Also, it is possible that participants may be recording the meeting with their phone cameras or other devices. If you do not wish to be recorded during the meeting, please turn off your microphone and camera.



ZOOM TIPS



Mute/unmute (you will remain muted until a host gives you access)



Q&A to ask questions throughout the presentation



Raise hand to ask for audio/video permission at the end of presentation

Agenda

- 1 Project Overview
- 2 Schedule Overview
- 3 Construction Enabling Overview
- 4 Construction Impacts
 - Construction Overview – Inpatient
 - Construction Overview – Garage
 - Construction Overview – Road Impacts
 - Construction Overview – Seismic Monitoring
- 4 Construction Communications
- 5 Questions



Project Overview

INPATIENT ADDITION



- 78 New Medical/Surgical Inpatient Beds
- Expanded Endoscopy Suite
- Expanded Imaging with New MRI
- New 8 Bed Extended Recovery Unit
- 98,000 SF in 5 floors

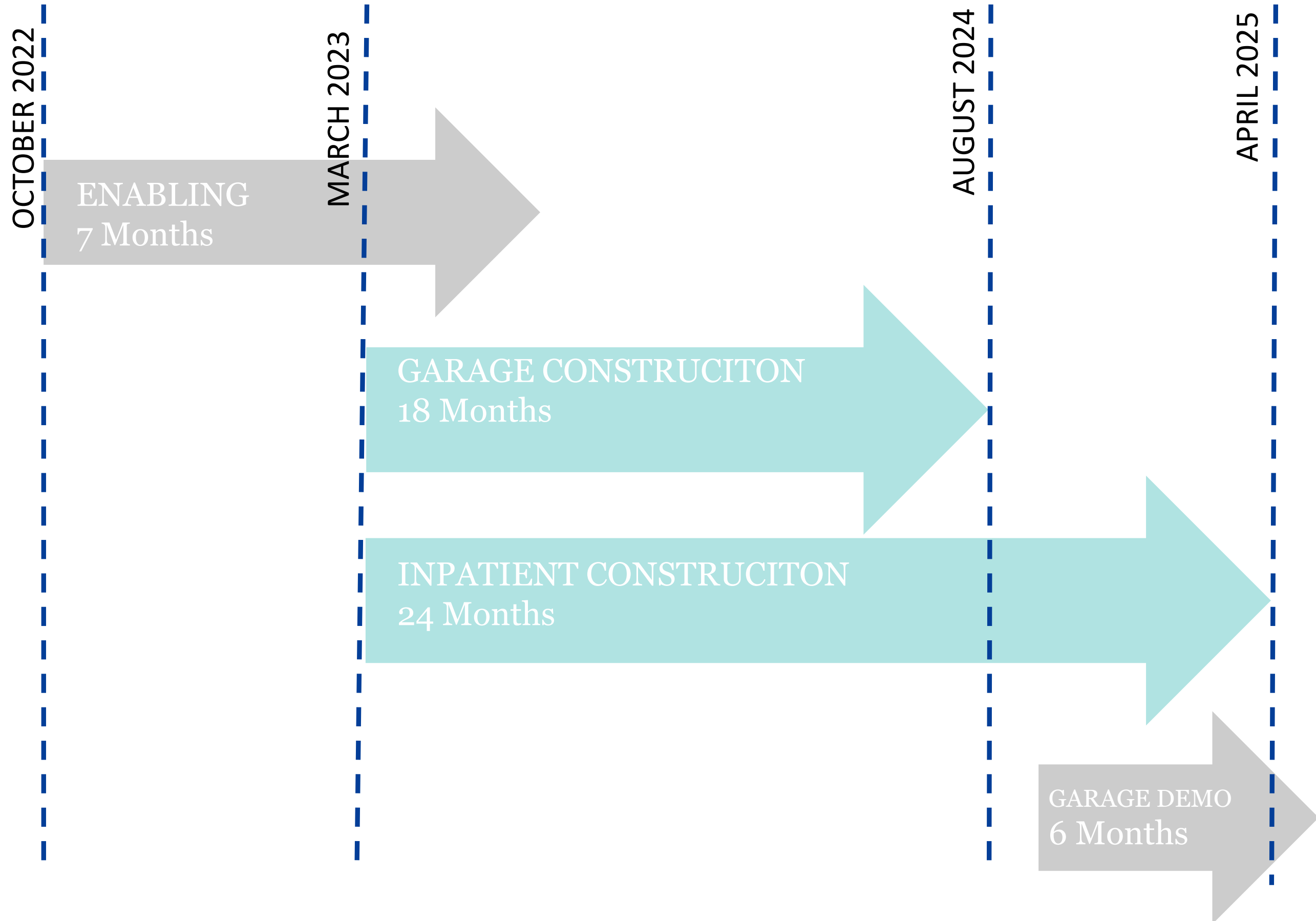
REPLACEMENT WEST GARAGE



- 332 Net New Parking Spaces
- 49 EV charging stations
- 112 Bike Racks



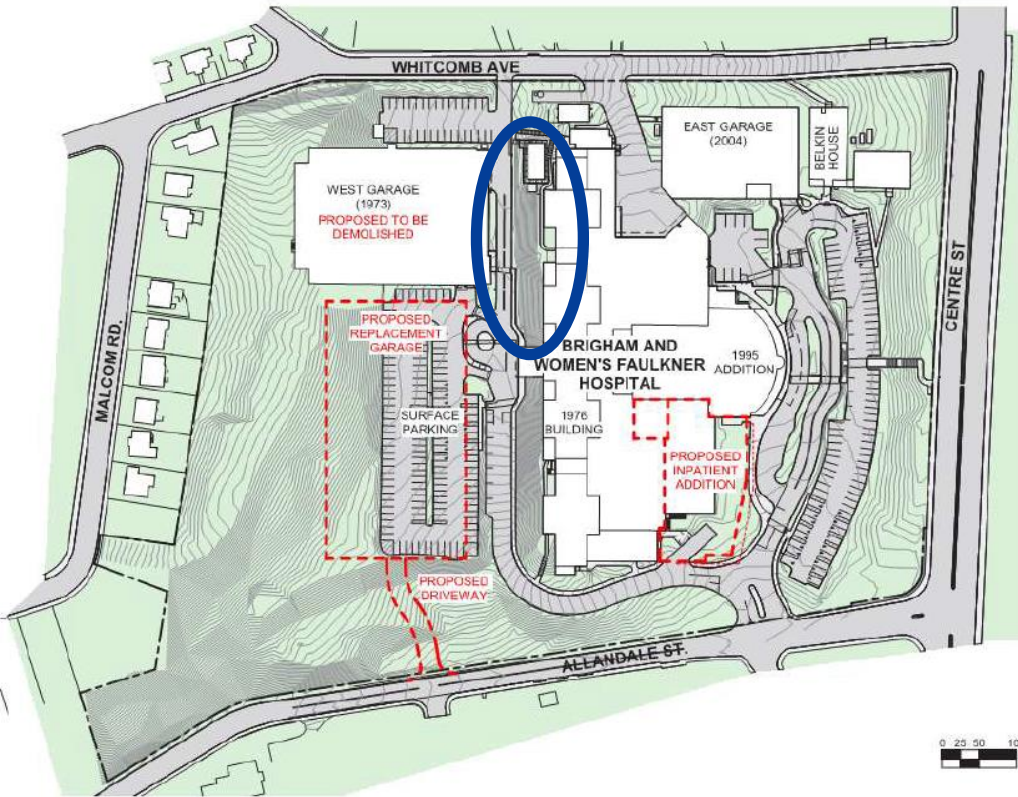
Schedule Overview



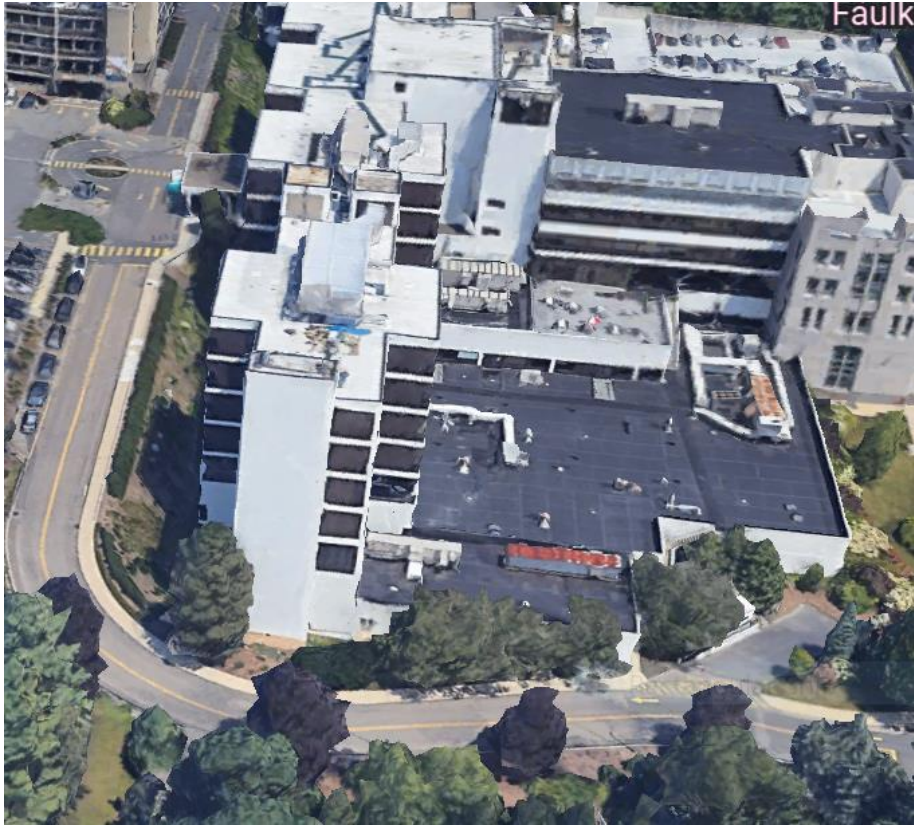
Construction Enabling Overview



Construction Enabling Work (Inside Campus)



2022			2023		
OCT	NOV	DEC	JAN	FEB	MAR

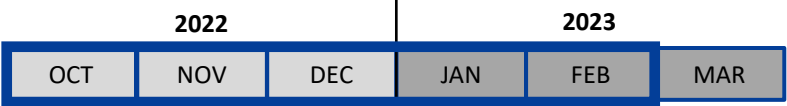
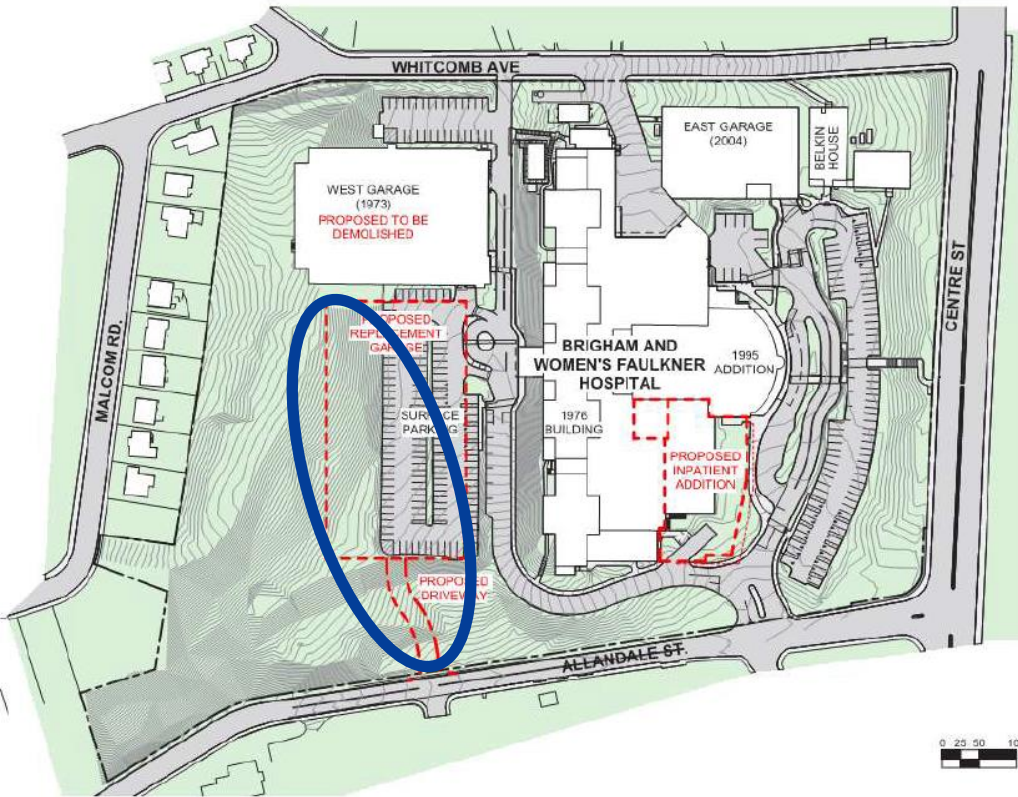


Utility Work
December 2022/March 2023

Shuttle Drop-Off
October/December 2022



Construction Enabling Work (Inside Campus)



Tree Removal/Site Prep – October 2022/February 2023
 -88 Trees to be removed



Construction Overview/Tree Removal



KEY

	Existing tree - deciduous
	Existing tree - evergreen
	Wooded area
	Tree designated for removal

February 2023
Tree Removal
- 88 Trees

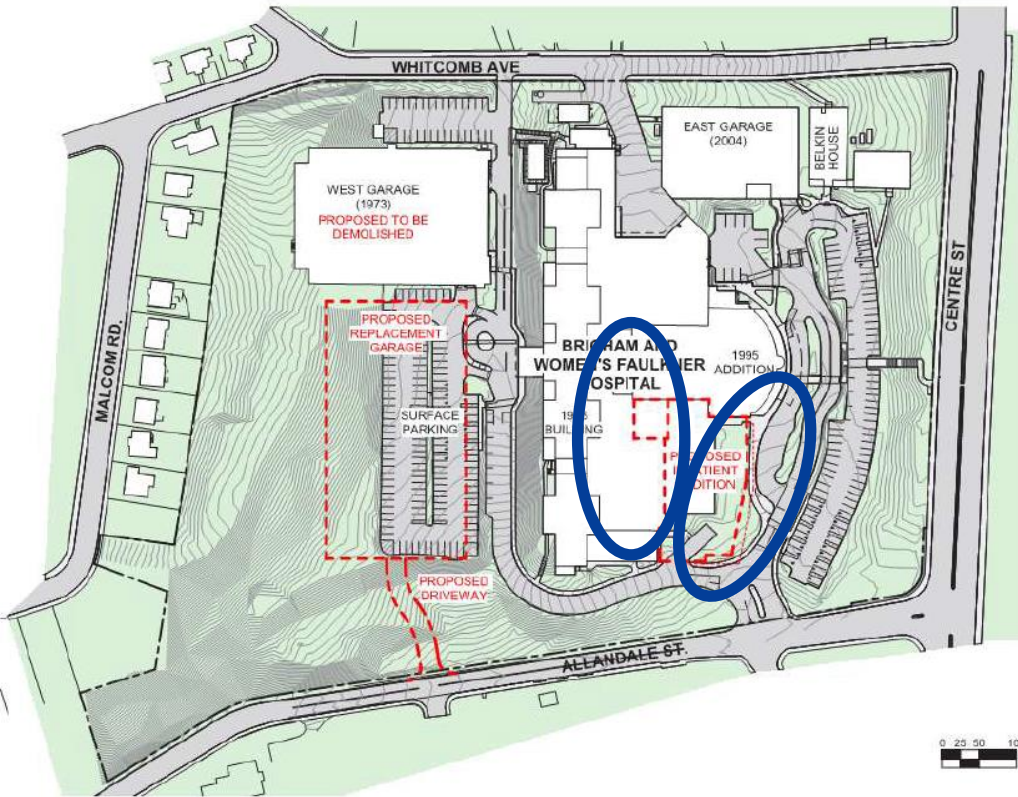


June/July 2024
Tree Planting
+ 190 Trees



Construction Enabling Work (Inside Campus)

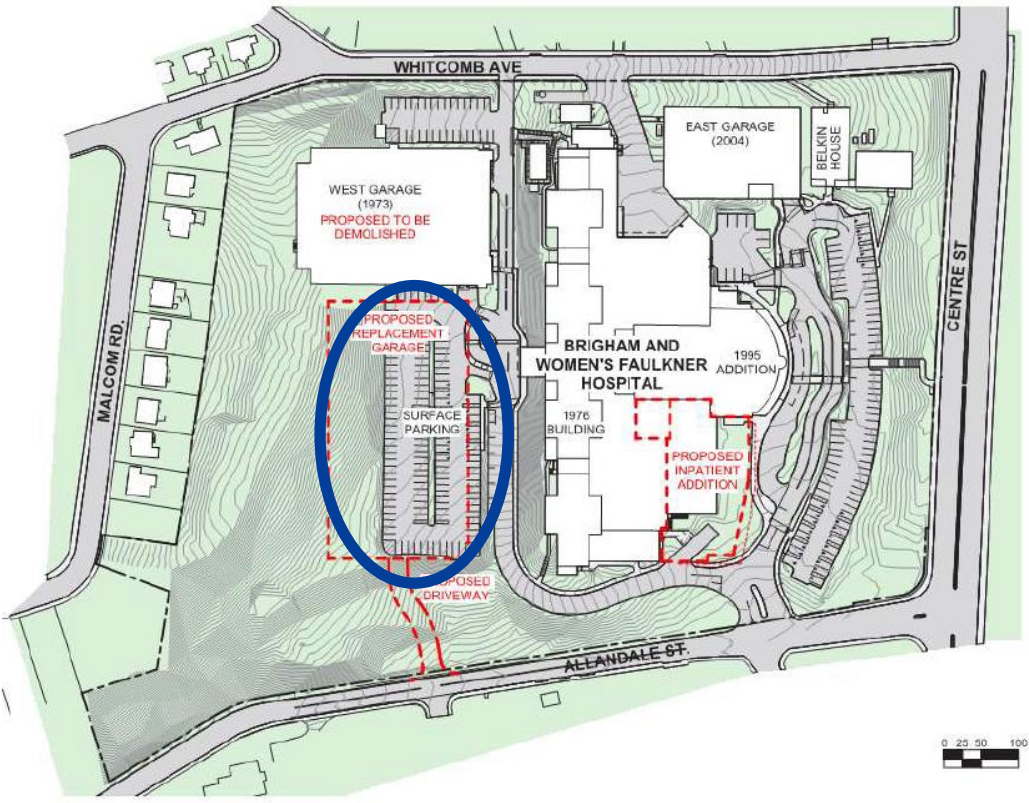
2022			2023		
OCT	NOV	DEC	JAN	FEB	MAR



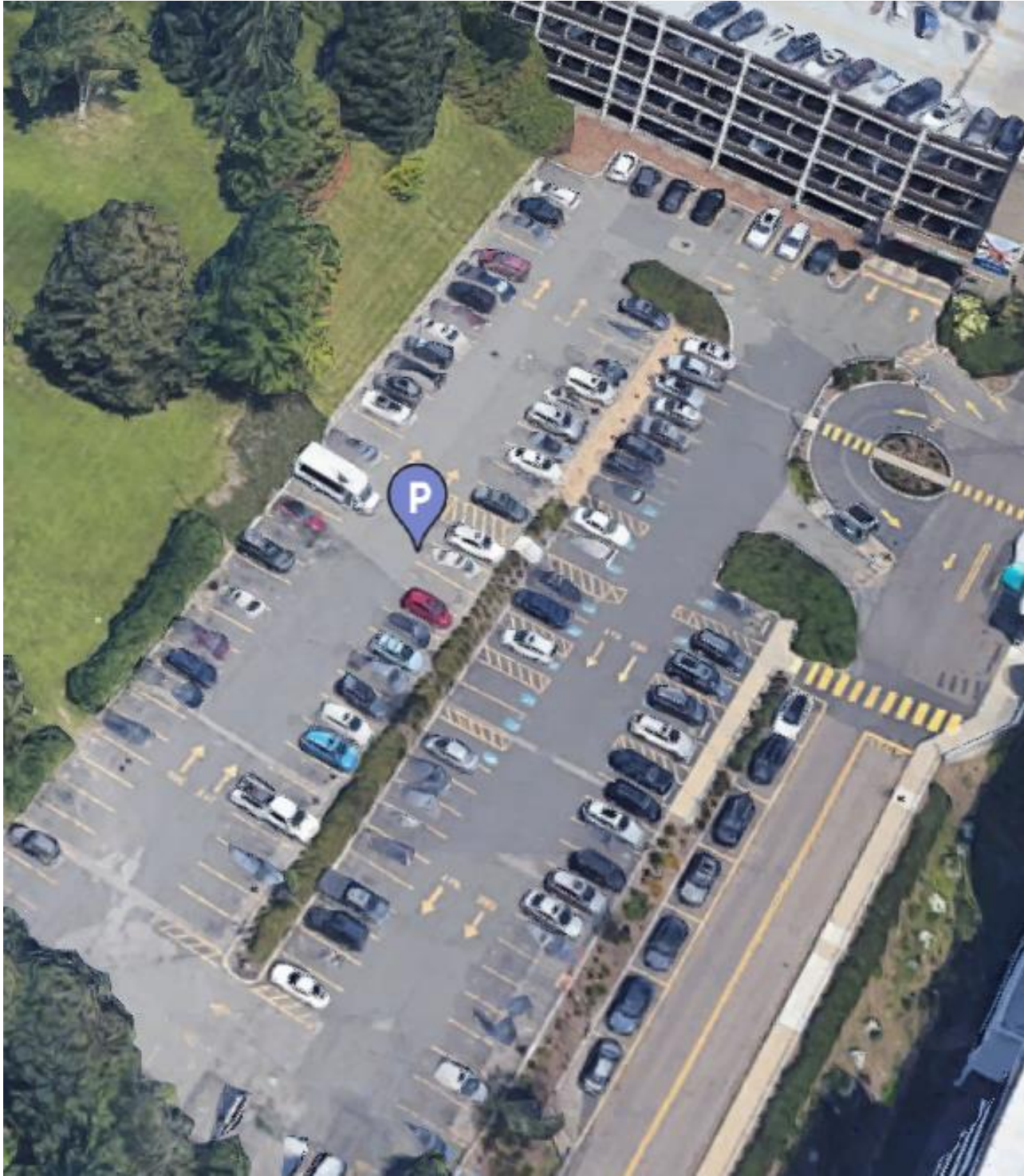
Replace Existing Roof Top Unit – January 2023/March 2023
 Site Prep – November 2022/February 2023



Construction Enabling Work (Inside Campus)



2022			2023		
OCT	NOV	DEC	JAN	FEB	MAR



Relocate Surface Parking Off Site – February/March 2023

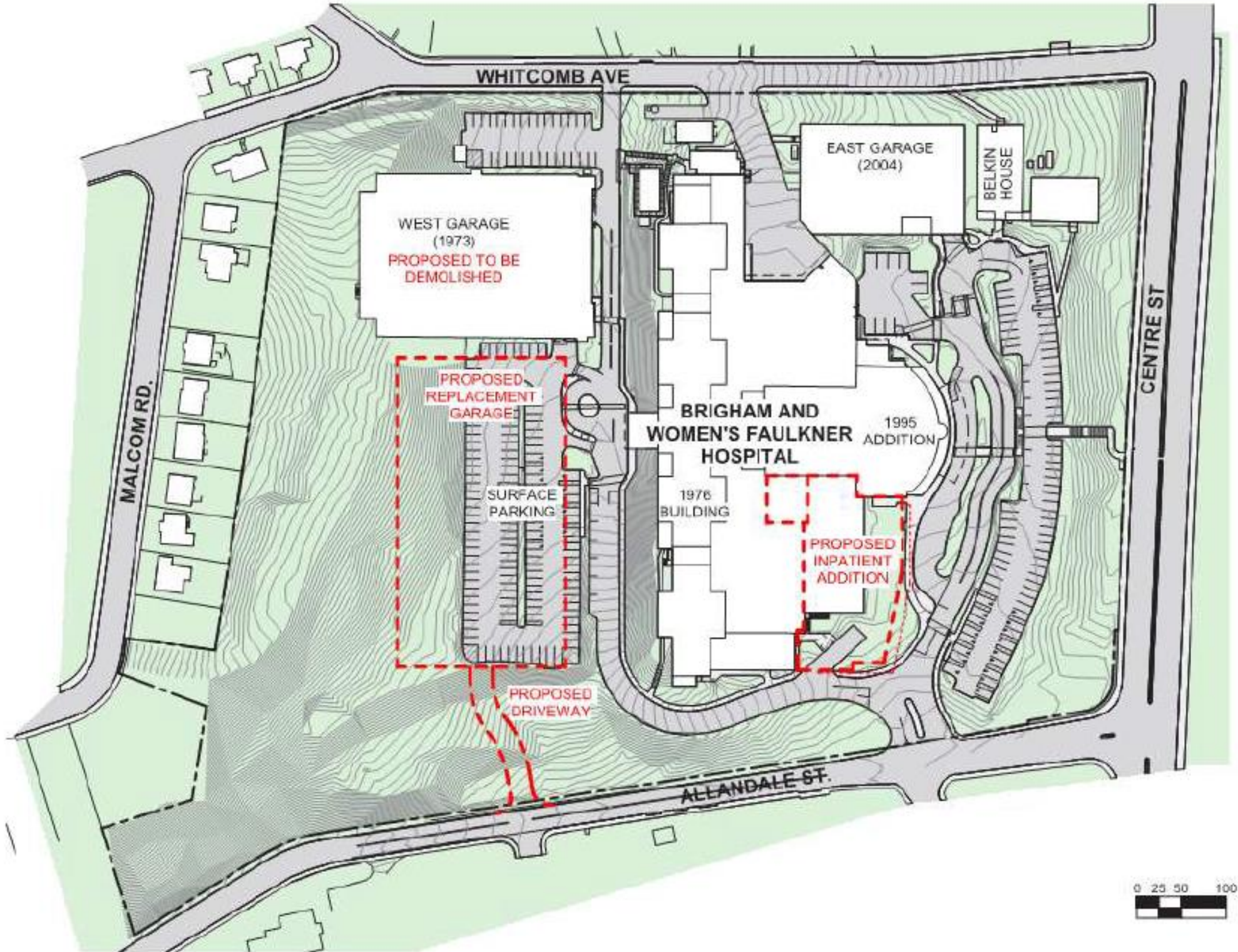


Construction Overview



Construction Overview

Construction Hours	
Monday - Friday	7:00 AM to 6:00 PM
Saturday	8:00 AM to 6:00 PM

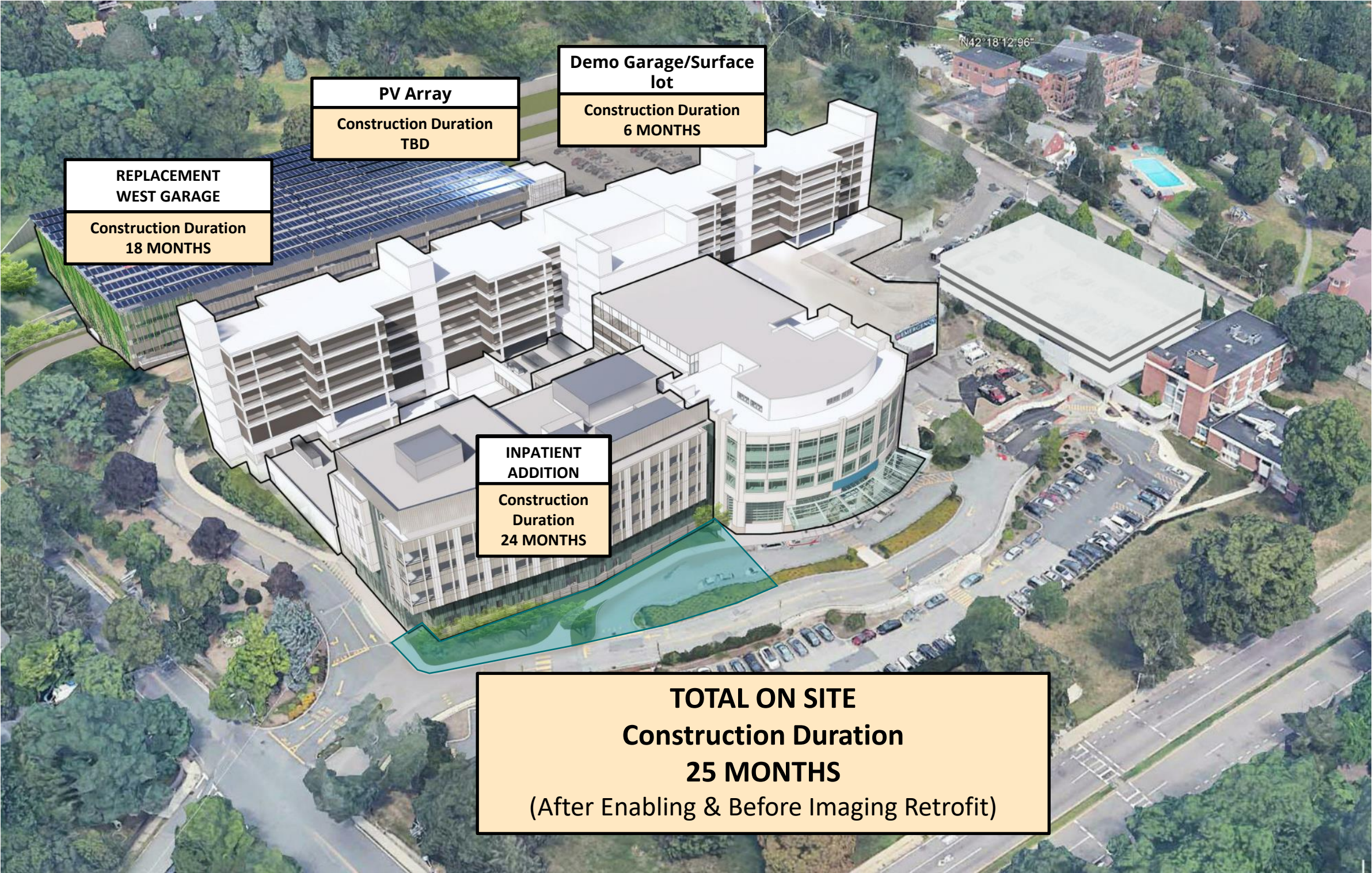


PROPOSED CAMPUS PLAN



Construction Overview

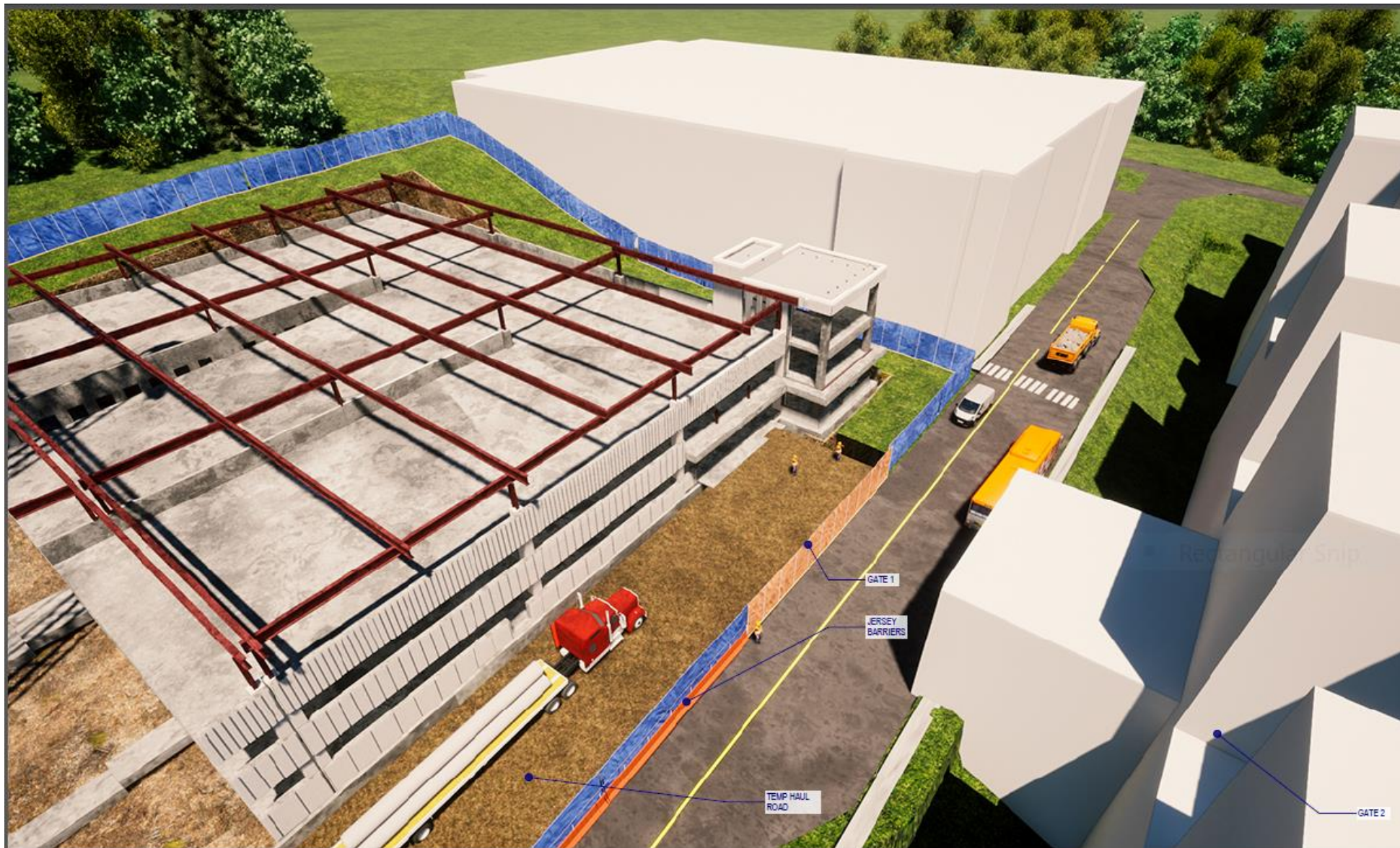
REPLACEMENT - WEST GARAGE	18 MONTHS (March 2023 to August 2024)	
DEMO GARAGE – SURFACE LOT		6 MONTHS (October 2024-May 2025)
INPATIENT ADDTION	24 MONTHS (March 2023 to April 2025)	
PV ARRAY		5 MONTHS



Construction Overview – Garage Construction

Garage Construction 4 Phases

Site Work	Winter 2022 – Fall 2023
Structure	Fall 2023 - Spring 2024
Interior Fit Out	Winter 2023 - Fall 2024
Existing Garage Demo/Surface Lot	Fall 2024 – Spring 2025



Construction Overview - Inpatient

Inpatient Construction 3 Phases	
Site Work	Winter 2023
Structure	Spring 2023 – Winter 2024
Interior Fit Out	Fall 2024 – Spring 2025



Construction Overview/Road Traffic and Work



Whitcomb Street
Shuttle buses reroute – Exit Via Whitcomb
Construction Trucks – Enter/Exit Via Whitcomb

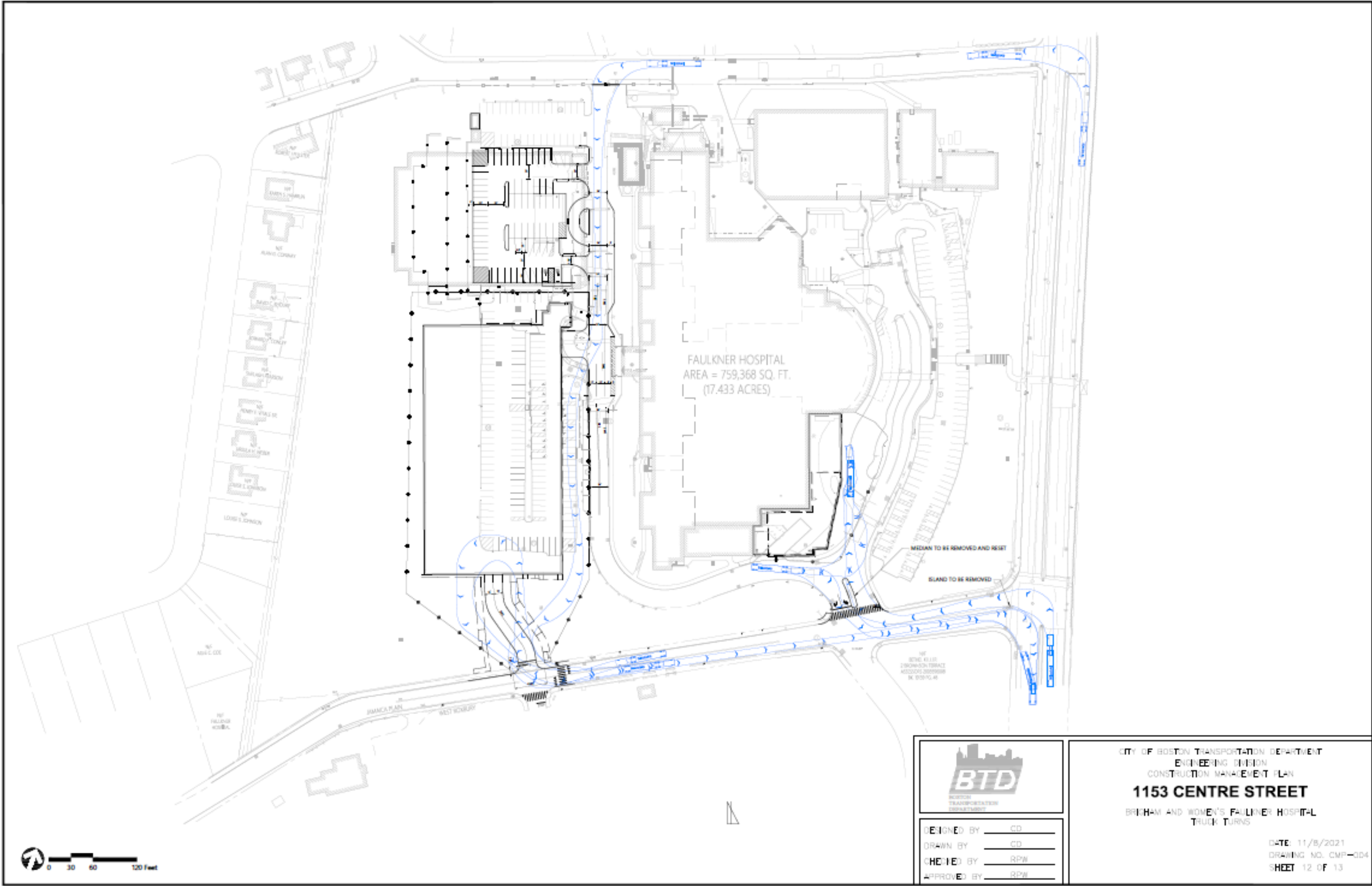
Centre Street
Temp Rework curbing @Whitcomb and Centre
Centre Street Road Improvements

Allandale Street

- Construction Truck Traffic
- Site/Utility Work
- Allandale Sidewalk and Road Improvements
- Allandale/Center Street Signaling Improvements



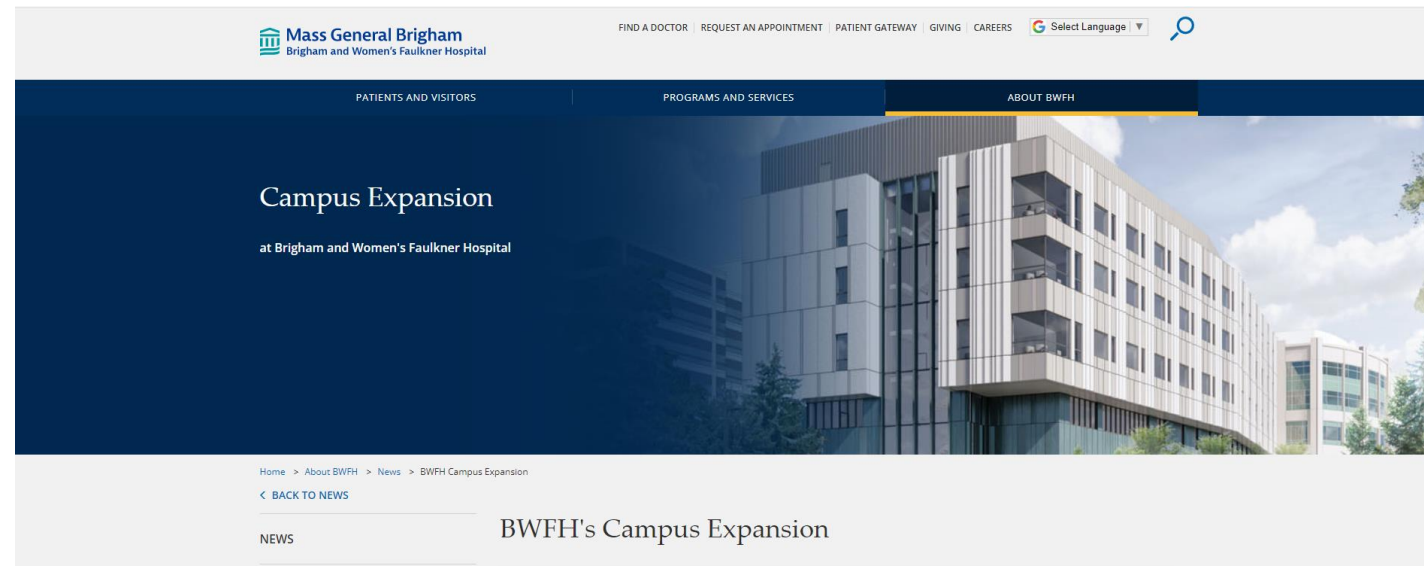
Construction Overview/Road Traffic and Work



Construction Communications



Construction Communications



- Construction Updates to be posted @ www.BWFH.org/building
- E-mail and print updates to be shared with community
[Contact Community Liaison to be added to mailing list](#)
- Community Liaison – Contact
David Goldberg
Executive Director, Communications and Community Relations
Telephone: 617-983-7588
E-mail: djgoldberg@bwh.harvard.edu



Questions?

